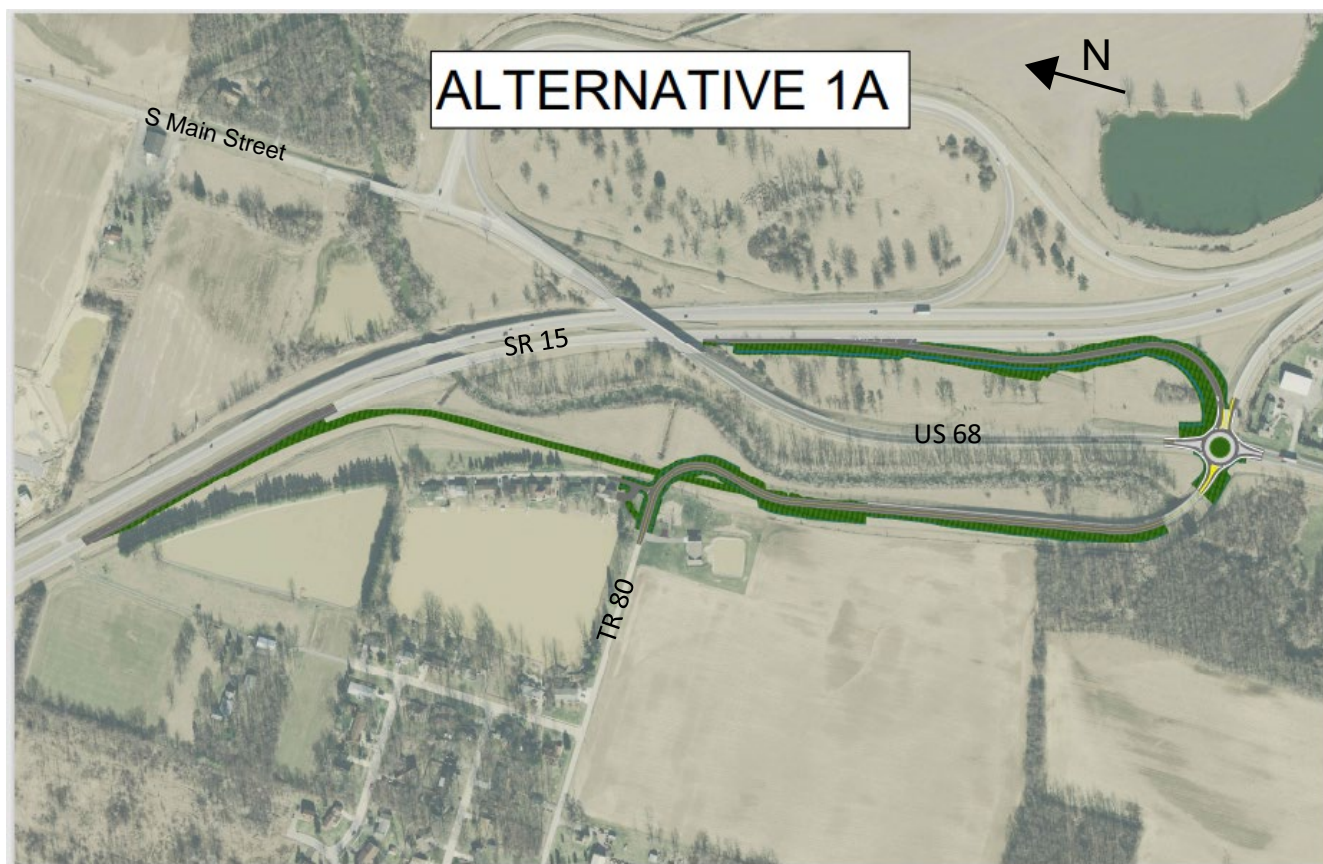


Construction of a proposed dry storage basin at Eagle Creek would alter existing local transportation routes and affect access to US-68. Five Alternatives were reviewed by ODOT and Alternatives 1A and 4 have been recommended for further evaluation. The next steps will likely include a feasibility study and possibly an interchange modification study, prior to finalizing the scope.

Township Road 49 relocation Conceptual Alternative 1A.

This scenario would construct a new US-68 southbound exit ramp from eastbound State Route 15. A deceleration lane would begin just south of the overpass bridge. The terminal intersection with US-68 would be a roundabout. The existing exit ramp would be removed north of Township Road 80. The remaining portion of the exit ramp could be restriped and converted to a two-way township road for local traffic, tying back in to the existing Township Road 80.



Reference: Eagle Creek Dry Storage Basin – ODOT Coordination

Township Road 49 relocation Conceptual Alternative 4.

This scenario would modify the State Route 15 southbound exit ramp from eastbound State Route 15. The terminal intersection with US-68 would be made just south of the US-68 overpass and the on ramp relocated to the same intersection. The remaining portion of the US-15 exit ramp could be restriped and converted to a two-way township road for local traffic, tying back in to the existing Township Road 80. A disadvantage for this concept is a second bridge structure over Eagle Creek will be required.

